



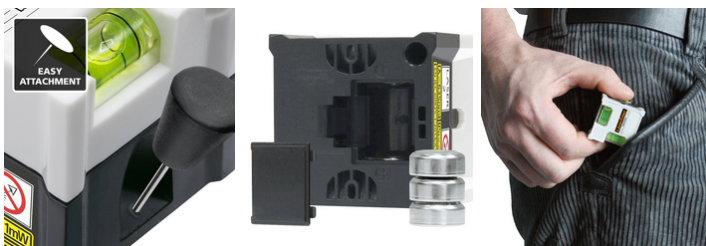
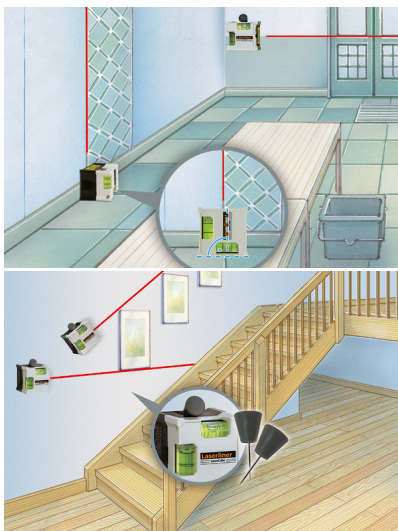
LaserCube



Practical line laser for quick alignment work on the ground or walls - recycled material is used for sustainability

This handy line laser is ideal for quick alignment work on the floor and on the wall. The device can be easily aligned using a vertical and horizontal spirit level and can also be used as a laser spirit level. Special pins are used for secure, damage-free fastening. A bright, highly visible laser and the compact design make it easy to use. The housing is largely made of recycled plastic and makes a valuable contribution to sustainability.

- Sustainable design: large proportion of the housing is made from recycled plastic
- Accurate horizontal and vertical alignment of objects
- Suitable for use on floors and walls
- Safe attachment with special pins without damaging surfaces such as finishing coats, carpets, wood, veneered surfaces etc.
- Bubble levels for adjustment
- Extremely easy to use due to compact design



TECHNICAL DATA

Vial Accuracy	± 1 mm / m
Accuracy	± 1 mm / m
Levelling	manual
Visibility (Typical)*	5 m
Laser Wavelength	635 nm
Laser Class	2 / < 1 mW (EN 60825-1:2014/ A11:2021 / EN 50689:2021)
Power Supply	3 x 1.5V LR44 (AG13)
Operating Time	approx. 4 hours
Operating Conditions	0°C ... 40°C, max. humidity 80% rH, no condensation, max. working altitude 4000 m above sea level
Storage Conditions	-10°C ... 70°C, max. humidity 80% rH
Dimensions (W x H x D)	38 mm x 38 mm x 38 mm x #
Weight	36 g (incl. batteries)

SCOPE OF DELIVERY



Item No. 081.108E GTIN (EAN) 4021563733644 SU 5