



## DampCheck



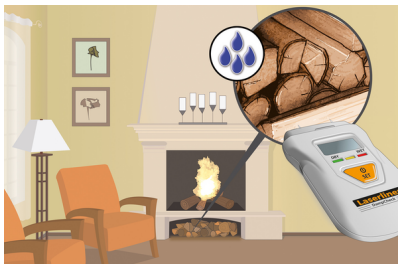
### Compact moisture measuring device

This compact moisture measuring device provides an easy means of testing the degree of dryness of firewood to conserve energy and reduce emissions. It can also be used to determine the ambient temperature in a measurement range from 0° to 40° and the moisture content in soft construction materials. The wet/dry indicator has three coloured LEDs and provides immediate information on the degree of moisture or dryness in the material under inspection. The results are displayed numerically and the current measured value can be retained in the display using the hold function.

- Effective reduction of energy and pollutants through precise determination of the dryness level of firewood
- Precise moisture content check for soft building materials
- Measures the ambient temperature
- Hold function for locking the current measured value on the display
- Wet/dry LED indicator

#### TECHNICAL DATA

<b>Measured Variable</b>	Moisture content of material (resistive) Ambient temperature
<b>Mode</b>	Wood (1 group) Building materials (1 material)
<b>Measuring Range Ambient Temperature</b>	0°C ... 40°C
<b>Accuracy Ambient Temperature</b>	± 2°C
<b>Measuring Range Wood</b>	Wood group A: 6% ... 60%
<b>Accuracy (Absolute) Wood</b>	± 2%
<b>Measuring Range Building Materials</b>	0.2% ... 2.9%
<b>Accuracy (Absolute) Building Materials</b>	± 0.3%



4x LR44

#### SCOPE OF DELIVERY



Item No. 082.003A      GTIN (EAN) 4021563689996      SU 5