



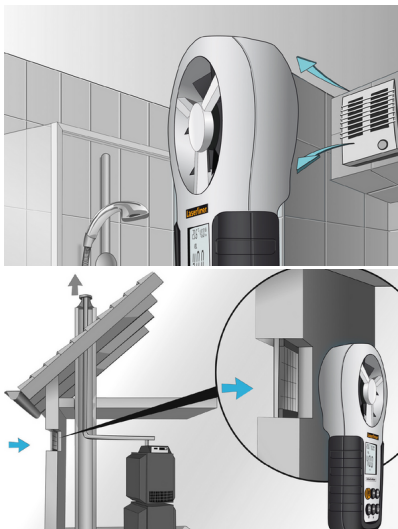
## AirflowTest-Master



Professional anemometer for measuring air flow, volumetric flow and wind speed

This professional anemometer provides precise measurement of air flow, volumetric flow and wind speed. The integrated sensors constantly register the ambient temperature and relative humidity, and calculate the dew point temperature. The hold function allows the current measured value to be retained on the display. The device features a USB interface and PC software for real-time logging. The 1/4" tripod connection allows the device to be easily set up in the test area, ideal for long-term measurements. The clearly laid out, illuminated display is easy to use.

- Precise air flow, volumetric flow and wind speed measurement
- Exact ambient temperature and humidity measurement and calculation of dew point temperature
- USB interface and PC software for real-time logging
- Large impeller
- Min/Max display
- Tripod connection for long-term measurements
- Easy-to-read display



### TECHNICAL DATA

<b>Measured Variable</b>	Wind speed Ambient temperature relative humidity Dew point temperature Wet-bulb temperature
<b>Mode</b>	Air flow
<b>Measurement Range Windspeed</b>	1.30 ... 98.50 ft/s 0.80 ... 58.30 knots 0.90 ... 67.0 mil/h 78 ... 5900 ft/m
<b>Measurement Range Air Volume Flow</b>	0 ... 99990 m <sup>3</sup> /min 0 ... 99990 ft <sup>3</sup> /min 0 ... 9999 m <sup>3</sup> /s
<b>Accuracy Windspeed</b>	± (2.0% + 50 digits) (m/s, km/h, ft/s, knots) ± (2.0% + 5 digits) (mil/h, ft/m)
<b>Resolution Air Volume Flow</b>	1 m <sup>3</sup> /min 1 ft <sup>3</sup> /min 1 m <sup>3</sup> /s
<b>Resolution Windspeed</b>	0.01 m/s 0.01 km/h 0.01 ft/s 0.01 knots 0.01 mil/h 1 ft/m
<b>Measuring Range Ambient Temperature</b>	-10°C ... 60°C
<b>Accuracy Ambient Temperature</b>	± 1.5°C
<b>Resolution Ambient Temperature</b>	0.1°C
<b>Measuring Range</b>	2002 0002

### SCOPE OF DELIVERY



Item No. 082.140A      GTIN (EAN) 4021563680566      SU 2