

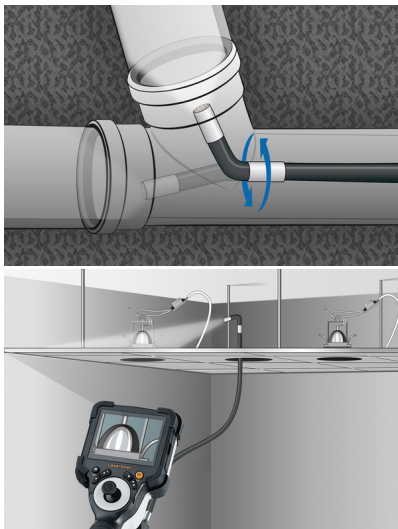
VideoInspector 3DM



Professional video inspection system with compact, individually flexible camera head – maximum flexibility for tricky jobs, ideal for small openings

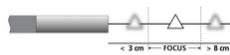
This professional video inspection system offers maximum flexibility, even on tricky jobs. It has an individually flexible, compact camera head which can be quickly adjusted to the optimum view using the joystick on the base unit. This allows hard-to-reach places to be investigated which cannot be viewed with fixed camera systems. The small diameter of the camera head enables even very small openings to be inspected. However, it provides very reliable, 360° inspection of, for example, pipe seals and the damage can be precisely located. The camera head and probe are waterproof and resistant to diesel, petrol, motor oil, AdBlue®, ethanol and sea water, making the device extremely versatile. Further benefits include the top quality LED object lighting and the magnetic stand for setting up the base unit.

- Effective problem localisation behind or in objects, walls, pipes, cavities
- Joystick control of the camera head provides maximum flexibility and optimum viewing
- Save time setting up on site with rapid adjustment of the required viewing angle



TECHNICAL DATA

Diameter Camera Head	6 mm
Camera Resolution	1280 x 720 pixels
Field of View (FOV)	78°
Depth of Focus (DOF)	3 ... 8 cm
Screen Type	3,5" TFT display
Display Resolution	640 x 480 pixels
Image Format	JPEG
Length of Probe	1 m
Illumination	4 brightness levels
Digital Zoom	2x digital zoom in 10% increments
Memory	Micro-SD memory card up to 32 GB
Ports	USB type C 1/4" tripod thread SD card slot
Power Supply	Li-ion battery pack 3.7V / 2.8Ah USB type C 5V / 2A
Dimensions (W x H x D)	108 mm x 260 mm x 110 mm x (incl. holder)
Weight	700 g (incl. battery pack)



1280 x 720 pixel

3D

LED LIGHT

IP 68

640 x 480 pixel

3,5" colour TFT

IP 54

180°

ZOOM 2x

REC

Micro

USB-C

Li-Ion Battery

RECHARGE

HARD

SCOPE OF DELIVERY



Item No. 082.234A GTIN (EAN) 4021563736829 SU 1