

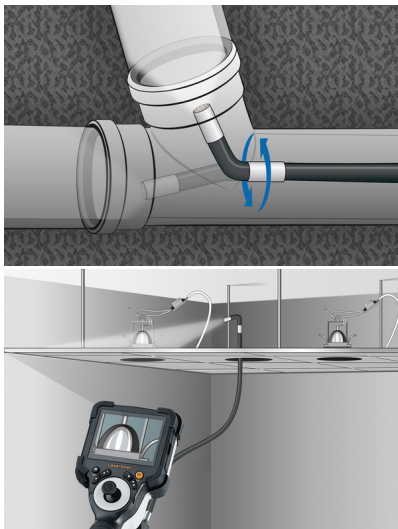


## Videolinspector 3DX (9 mm; 1 m)

Professional video inspection system with individually flexible camera head – maximum flexibility for tricky jobs

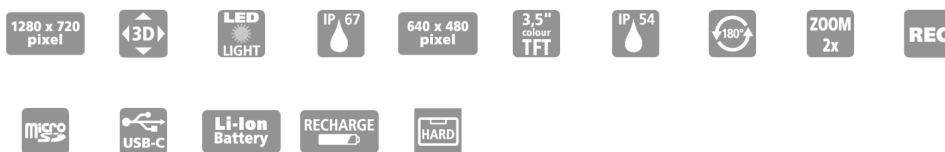
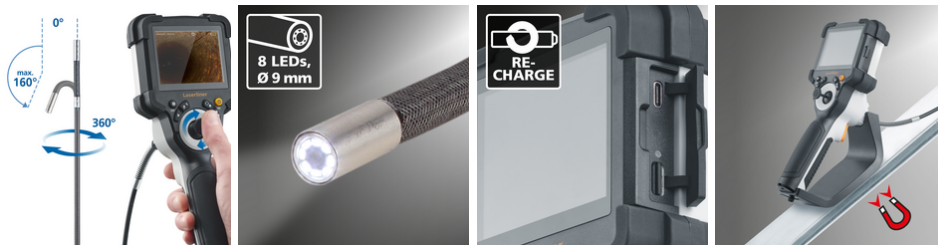
This professional video inspection system offers maximum flexibility, even on tricky jobs. It has an individually flexible camera head which can be quickly adjusted to the optimum view using the joystick on the base unit. This allows hard-to-reach places to be investigated which cannot be viewed with fixed camera systems. However, it provides very reliable, 360° inspection of, for example, pipe seals and the damage can be precisely located. The camera head and probe are waterproof and resistant to diesel, petrol, motor oil, AdBlue®, ethanol and sea water, making the device extremely versatile. Further benefits include the top quality LED object lighting and the magnetic stand for setting up the base unit.

- Effective problem localisation behind or in objects, walls, pipes, cavities
- Joystick control of the camera head provides maximum flexibility and optimum viewing
- Save time setting up on site with rapid adjustment of the required viewing angle
- Perfect for hard to reach locations which cannot be viewed with fixed camera systems
- Reliable 360° inspection of pipe seals
- Waterproof camera head and probe: also resistant to diesel, petrol, motor oil, AdBlue®, ethanol and sea water (salinity 28%)



### TECHNICAL DATA

<b>Diameter Camera Head</b>	9 mm
<b>Camera Resolution</b>	1280 x 720 pixels
<b>Field of View (FOV)</b>	90°
<b>Depth of Focus (DOF)</b>	1.5 ... 10 cm
<b>Screen Type</b>	3,5" TFT display
<b>Display Resolution</b>	640 x 480 pixels
<b>Image Format</b>	JPEG
<b>Length of Probe</b>	1 m
<b>Illumination</b>	4 brightness levels
<b>Digital Zoom</b>	2x digital zoom in 10% increments
<b>Memory</b>	Micro-SD memory card up to 32 GB
<b>Port</b>	USB
<b>Ports</b>	USB type C 1/4" tripod thread SD card slot
<b>Power Supply</b>	Li-ion battery pack 3.7V / 2.8Ah USB type C 5V / 2A
<b>Dimensions (W x H x D)</b>	108 mm x 260 mm x 110 mm x (incl. holder)
<b>Weight</b>	650 g (incl. battery pack)



### SCOPE OF DELIVERY



Item No. 082.235A      GTIN (EAN) 4021563723294      SU 2