

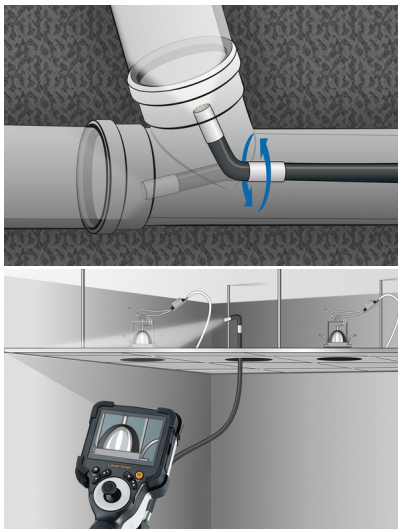
VideoInspector 3DL (6 mm; 2 m)



Professional video inspection system with compact, individually flexible camera head – maximum flexibility for tricky jobs and perfect for small openings

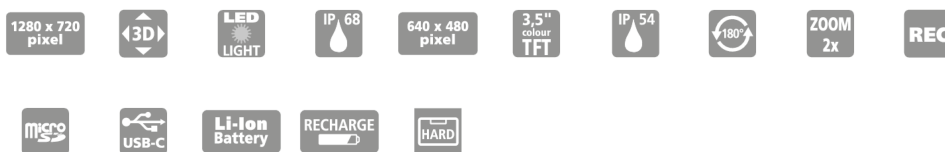
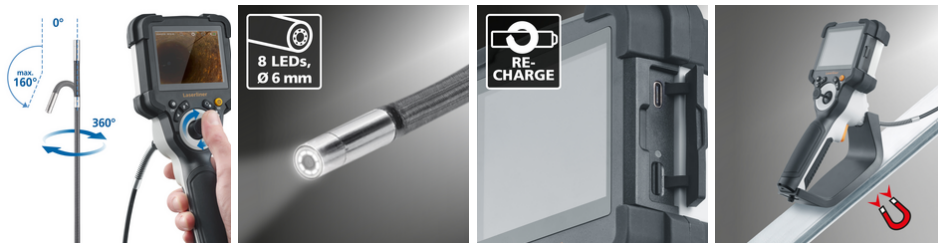
This professional video inspection system offers maximum flexibility, even on tricky jobs. It has an individually flexible and extremely small camera head which is perfect for narrow openings. The camera head can be quickly adjusted to the optimum view using the joystick on the base unit. This allows hard-to-reach places to be investigated which cannot be viewed with fixed camera systems. However, it provides very reliable, 360° inspection of, for example, pipe seals and the damage can be precisely located. The camera head and probe are waterproof and resistant to diesel, petrol, motor oil, AdBlue®, ethanol and sea water, making the device extremely versatile. Further benefits include the top quality LED object lighting and the magnetic stand for setting up the base unit.

- Effective problem localisation behind or in objects, walls, pipes, cavities
- Joystick control of the camera head provides maximum flexibility and optimum viewing
- Save time setting up on site with rapid adjustment of the required viewing angle
- Perfect for hard to reach locations which cannot be viewed with fixed camera systems
- Reliable 360° inspection of pipe seals
- Compact camera head ideal for inspecting small openings



TECHNICAL DATA

Diameter Camera Head	6 mm
Camera Resolution	1280 x 720 pixels
Field of View (FOV)	78°
Depth of Focus (DOF)	3 ... 8 cm
Screen Type	3,5" TFT display
Display Resolution	640 x 480 pixels
Image Format	JPEG
Length of Probe	2 m
Illumination	4 brightness levels
Digital Zoom	2x digital zoom in 10% increments
Memory	Micro-SD memory card up to 32 GB
Port	USB
Ports	USB type C 1/4" tripod thread SD card slot
Power Supply	Li-ion battery pack 3.7V / 2.8Ah USB type C 5V / 2A
Dimensions (W x H x D)	108 mm x 260 mm x 110 mm x (incl. holder)
Weight	750 g (incl. battery pack)



SCOPE OF DELIVERY



Item No. 082.236A GTIN (EAN) 4021563723300 SU 1