

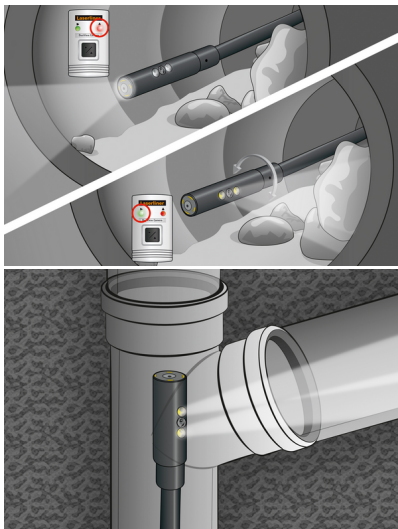


VideoFlex G4 Duo

Professional video inspection system with exchangeable views

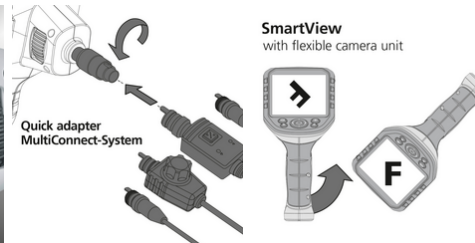
This professional video inspection system allows hard-to-reach places, such as in pipes, wall cavities and motor vehicles to be visually inspected. Intuitive rotation of the base unit provides the user with easy spatial orientation. The efficient LED object illumination ensures reliable image capture, even in poor conditions. The true colour reproduction provides an extremely realistic image. Front and side cameras provide a quick change of view at the touch of a button. Details can be clearly captured using the zoom function. The ergonomically designed device fits well in the hand and is also comfortable to use, even after extended periods of work. With eight languages and an exchangeable camera unit, this device can be used in many different application areas. Images and videos can be saved on an SD memory card and analysed via the USB-C interface.

- Effective problem localisation behind or in objects, walls, pipes, cavities
- SmartView: Intuitive rotation of the base unit for easy spatial orientation
- Quick change of view at the touch of a button thanks to front and side cameras
- 4 high-performance LEDs for powerful object lighting at the camera



TECHNICAL DATA

Diameter Camera Head	10 mm
Camera Resolution	640 x 480 pixels
Field of View (FOV)	57°
Depth of Focus (DOF)	Front: 3 ... 5 cm / Side: 1 ... 5 cm
Screen Type	3,5" Colour TFT
Display Resolution	320 x 240 pixels
Image Format	JPEG
Length of Probe	1 m
Illumination	5 brightness levels
Digital Zoom	2x digital zoom in 20% increments
Memory	Micro-SD memory card up to 16 GB
Port	USB
Ports	USB type C RCA video output
Power Supply	USB type C 5V / 2A Li-ion battery pack 3.7V / 2.8Ah
Dimensions (W x H x D)	181 mm x 207 mm x 96 mm
Weight	342 g (incl. battery pack)



SCOPE OF DELIVERY



-
-
-
-
-
-
-
-
-
-
-

Item No. 082.244A GTIN (EAN) 4021563715985 SU 2