

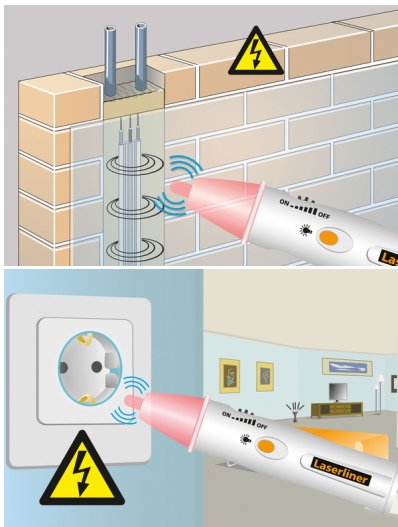


AC-Check

Non-contact voltage tester with adjustable sensitivity

The non-contact voltage tester helps you to improve working safety. The measuring instrument is used for the effective detection of live, extremely dangerous cables and line breaks. Lines can be traced at great depth due to the adjustable sensitivity. The integral lamp allows the test area to be illuminated.

- Contactless detection of live cables to increase working safety
- Locates electrical voltages in cables, sockets, bulb sockets and fuses
- Effective detection of line breaks in cables and wires
- Efficient: one measuring instrument can be used for the entire building installation
- Extremely high sensitivity for tracing lines at great depths
- Clearly visible LED for indicating electrical voltages
- Good visibility through green laser technology
- Integrated torch for illuminating the test area
- Robust, impact-resistant housing



TECHNICAL DATA

Measured Variable	Registration of electrostatic fields produced by alternating voltages
Features	single-pole phase test non-contact alternating voltage detection adjustable sensitivity
AC Voltage	Bandwidth: 50 ... 400 Hz
External Voltage Range Voltage Detector	5 ... 1000V AC
Dimensions (W x H x D)	32 mm x 154 mm x 28 mm



SCOPE OF DELIVERY

