

ActiveFinder



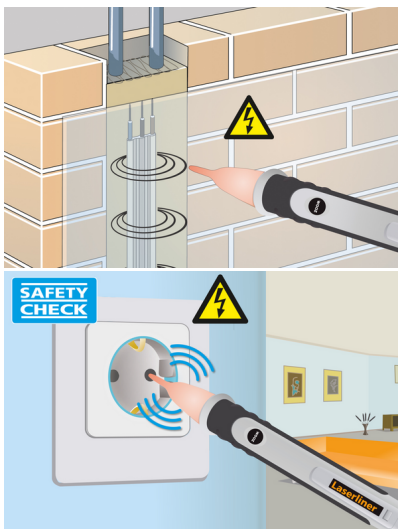
Work safely on electrical lines – in handy pen format – use of recycled material for sustainability

This non-contact voltage tester provides a high level of industrial safety by detecting existing alternating voltages. The device determines the polarity of L- or N-conductors, detects live cables and locates electrical voltages in cables, sockets, bulb sockets and fuses. Cable breaks can be effectively identified. Its compact design, highly visible LED indicators and integrated torch make this a very convenient tool. The housing is largely made of recycled plastic, making a valuable contribution to sustainability.

TECHNICAL DATA

Measured Variable	Registration of electrostatic fields produced by alternating voltages
Features	ZOOM function
AC Voltage	Bandwidth: 50 ... 60 Hz
External Voltage Range Voltage Detector	24 ... 1000V AC
Dimensions (W x H x D)	25 mm x 158 mm x 21 mm

- Sustainable design: large proportion of the housing is made from recycled plastic
- Locates electrical voltages in cables, sockets, bulb sockets and fuses
- Easy determination of the polarity of L/N conductors, e.g. on sockets or terminals
- Effective detection of line breaks in cables and wires
- Extremely high sensitivity for tracing lines at great depths
- Clearly visible LED for indicating electrical voltages
- Integrated torch with separate ON/OFF button
- Robust, impact-resistant housing



SCOPE OF DELIVERY



Item No. 083.010E GTIN (EAN) 4021563735716 SU 5